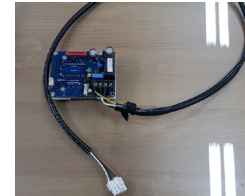
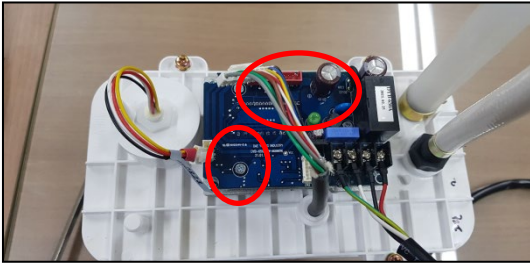


BLDC PCB BOARD REPLACEMENT

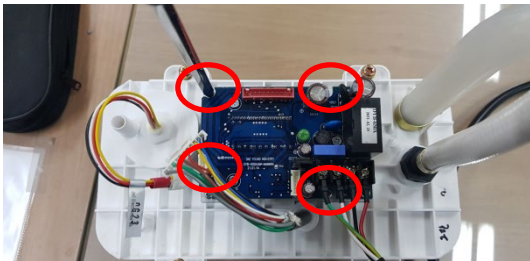
(DC Drain Pump for 70lbs undercounter, IU-0070)

Step 1 : disassemble two connectors

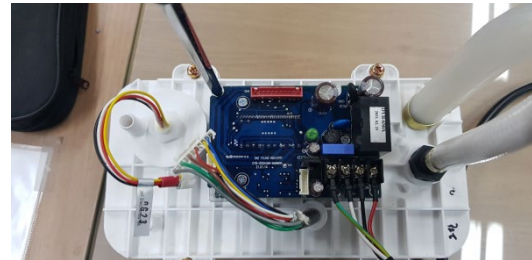


※ New PCB board
(code #3670-14900)

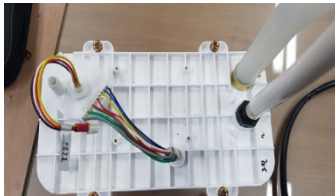
Step 2 : Remove four screws



Step 3 : Replace PCB with new one



※ After removal of PCB board



Step 4 : Assemble two connectors

